

BEGIN

SANTA CLARA BLOCK

MP 42.6

SOUTH BAY HISTORICAL RAILWAY SOCIETY

JANUARY 2024



SANTA CLARA BLOCK

January, 2024

Welcome to the Santa Clara Block, the quarterly newsletter of the South Bay Historical Railroad Society. We have had a great fourth quarter of 2023 with many activities in the Depot Museum, lots of visitors to our operating HO and N scale layouts as well as another very successful Open House. Please join us at the Santa Clara Depot soon!



website for South Bay Historical Railroad Society -- sbhrs.org

On the Cover

Santa Claus makes good use of the SBHRS (ex Santa Fe) business car while rolling past Diridon Station.

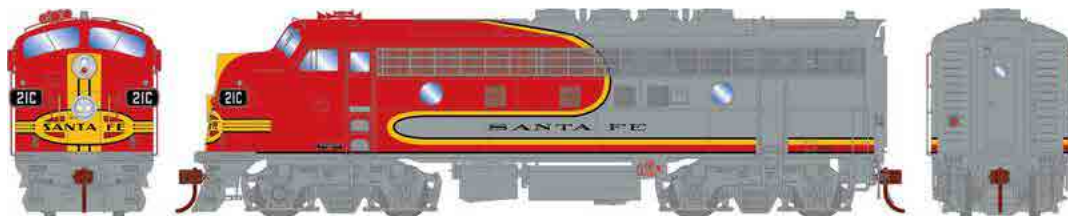
Date: December 2, 2023
Photo: Brian Hitchcock



MANIFEST

IN THIS ISSUE:

TIMETABLE	4
ALL ABOUT SBHRS	8
DEPOT UPDATE.....	14
NOVEMBER OPEN HOUSE.....	24
WHRS LAYOUT UPDATE.....	30
CALTRAIN UPDATE	36
TRACKAGE RIGHTS.....	44
SWITCHING SAN MIGUEL.....	48
FROM THE ARCHIVES	54
END SANTA CLARA BLOCK.....	56





Announcements

Please review the activities shown here and plan to attend!

Members meetings will be the second Saturday of odd months.

The Depot operating layouts are open each week on Tuesdays from 5-8pm
and Saturdays from 10am-4pm.

We welcome new members, please see our website for more information

sbhrs.org

Our next Open House will be April 6 and 7, 2024.

Storytime at SBHRS

Please join us for monthly Storytime at SBHRS. Introduce your child to the world of trains and make new friends. Geared towards children under the age of 8, their siblings and friends. Must be accompanied by parent or caretaker.

The Third Saturday Of The Month

Time: 10:30 A.M. -11:00 A.M.

Unless Otherwise Posted

South Bay Historical Railroad Society
1005 Railroad Avenue, Santa Clara, CA 95050
Telephone: (408) 243-3969



Story Time is offered every month on the third Saturday

Host a Youth Birthday Party or other Special Occasion Event at Santa Clara Depot!

Santa Clara Depot provides a unique setting for birthday parties, anniversary, retirement or other special events.

The South Bay Historical Railroad Society offers:

The Freight House Meeting Room

-with space for 45-50 persons, seated

Folding tables and cushioned chairs

Large screen LCD TV, plus a DVD/VCR combo player

Digital projector and 5 x 9-foot projection screen

Small kitchen/serving area

-with microwave oven, refrigerator and sink

The Train Room, with model railroad layouts

-docent-operated trains, by arrangement

For arrangements and reservations:

Telephone:

408-243-3969,

or visit website:

www.sbhrs.org

Contact:

Events Coordinator



SBHRS Open House!

Please join us for our next Open House. The Santa Clara Depot will be open Saturday and Sunday, April 6 and 7, 2024. Both the HO scale and N scale layouts in the Depot will be operating. The Open House runs from 10am to 5pm Saturday April 6 and 10am to 4pm Sunday April 7.

We will have an extensive selection of model train items for sale in the Depot Museum area. We will be selling items that have been donated to the Depot. We always have recent donations for sale so there will be many items that were not available at previous Open House events.

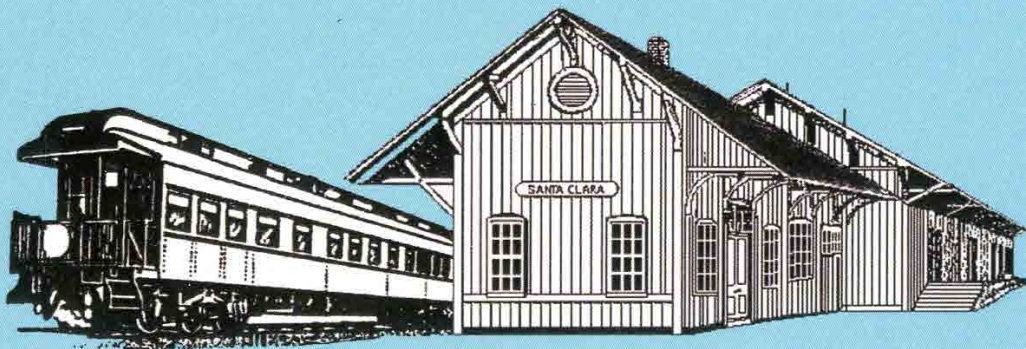
In addition to the operating model train layouts and the Flea Market happening in the Depot Museum, you can also tour the Railcar adjacent to the Depot as well as visit the Tower located just north of the Depot. Food and drink will be available in the Depot as well.

The SBHRS Open House is a bi-annual event, the next event will be in November 2024.

SOUTH BAY HISTORICAL RAILROAD SOCIETY

Spring 2024 Open House / Fund Raiser

**Operating Model Trains / Historic Museum, Railcar
and Tower / Flea Market**



Saturday, April 6th, 10 am – 5 pm

Sunday, April 7th, 10 am – 4 pm

Donations: Adults \$5; Under 18 Free

**Santa Clara Caltrain Depot -- 1005 Railroad Ave., Santa Clara
sbhrs.org**



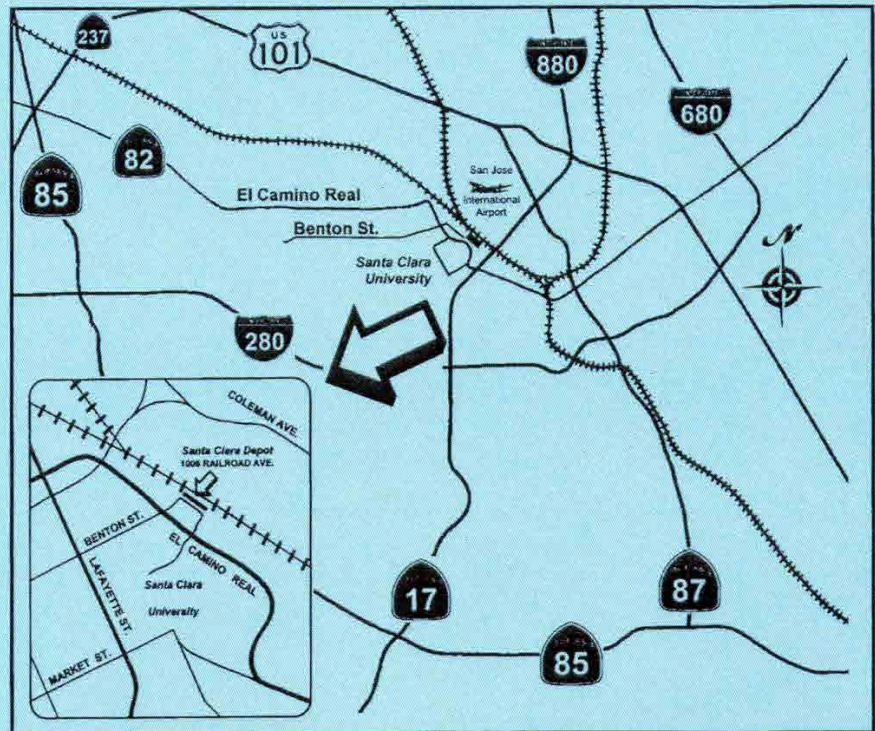
All Roads Lead to Santa Clara Depot

*or, Combine
Your Caltrain
Peninsula Commute
Trip
with a Visit
to Our Show*

All Saturday and Sunday
Trains Stop at Santa Clara



Call Caltrain
at 1-800-660-4287
for Ticket
and Schedule
Information





All About SBHRS

South Bay Historical Railroad Society Museum

Welcome to the oldest depot on the west coast, with over 150 years of continuous rail service to the community. Our members are volunteers and work on the renovation and preservation of the Santa Clara Railroad Depot, the Santa Clara Tower, two maintenance-of-way buildings, and the Oregon-Washington Railroad & Navigation business car #184.

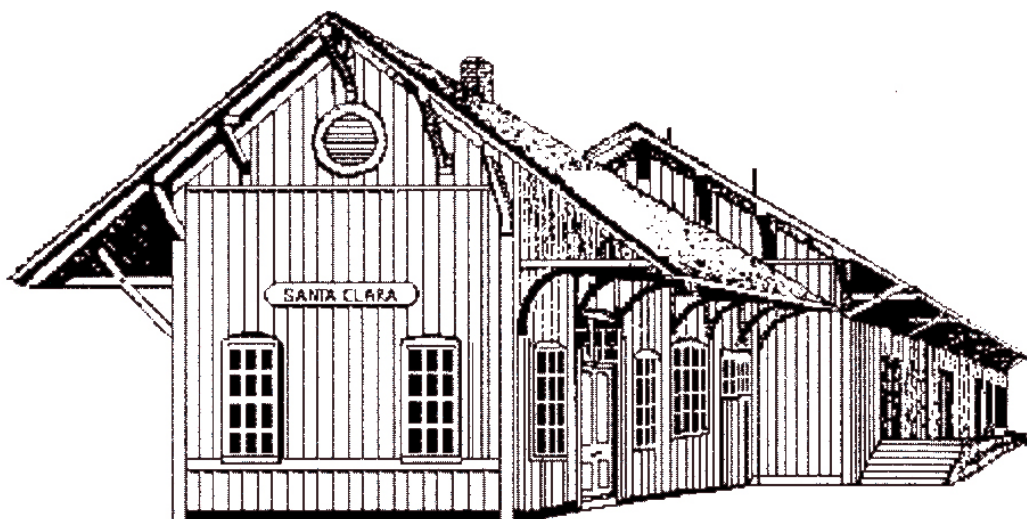
The depot is a public transportation hub for Caltrain, Capitol Corridor, Altamont Corridor Express trains, and Valley Transit Authority buses.

Membership in SBHRS is open to anyone

Our members are volunteers and work on the renovation and preservation of the Santa Clara Railroad Depot, the Santa Clara Tower, two maintenance-of-way buildings, and the Oregon-Washington Railroad & Navigation business car #184.

SBHRS and the Board of Directors are the historic Covenant holders for the preservation of the six historic peninsula depots: San Jose (Diridon Station), Santa Clara, Menlo Park, San Carlos, Burlingame, and Millbrae.

The Santa Clara freight depot shipped Santa Clara-grown agricultural products by rail throughout California and to the rest of the country.





N scale and HO scale layouts in the Santa Clara Depot

Museum Features

Historic 1870s era freight depot, displaying a varied collection of historic railroad artifacts like control panels, a velocipede, track, a locomotive bell, and the scale used by the freight depot, but emphasizing signaling and communication such as hand held switchman's lamps, semaphore signals, Train Order equipment, and railroad crossing signals.

Operational HO, and N scale model railroad layout, displays of various railroad eras and operations venues. The engineers you see running model trains are volunteer museum members exhibiting their own models for the public.

Historic 1864 passenger station waiting room, displays passenger train items such as dining car dishes.

2nd largest railroading history library in the state, with over 3,000 books and other materials available for research.

The former Acme Freight Company office, representing a turn of the century railroad boardroom, displaying photographs, conductor hats, and Bay Area railroad maps.

Accessible by Caltrain, Capitol Corridor, and VTA bus.



The HO scale layout

Membership Benefits

- Can add up to four additional family members.
- Docent the museum, help in the library, and maintain and repair historic buildings.
- Support community through outreach, events, rail safety, and educational tours that honor and support area history.
- Relax and socialize and enjoy camaraderie with new friends and our community of like minded fellow train buffs active in the hobby.
- Run model trains (10 yrs and older) on our large layouts, where they look more real, for the public to watch during open hours.
- Encouragement and mentorship for modelers. Get assistance with your model trains and learn modeling skills (scenery, train, electrical). Specialized modeling tools and other resources.
- Checkout privileges at the museum library and discounts for Company Store and museum room rentals for parties and events.
- Enjoy the environment of the depot, nice location, public transportation (bus and trains).

Open House Fundraiser

Our biannual Open House fundraiser, typically held on the first weekend of April and November, with an admission charge for adults only (children are free) features these additional attractions:

- The Santa Clara interlocking switching tower, built in 1926, located at the north end of the depot platform.
- The Oregon-Washington Railroad & Navigation business car, built in 1912 as a Pullman cafe parlor observation car and converted in 1922, located on the track side of the museum.
- Shop at our Company Store, where donations are for sale as a fundraiser, in-depot only during our Open House, or year around on E-Bay. (TrainGuys_SantaClara)
- Our Speeder, a motorized track inspectors' car that was used to check the condition of the rails.



Caltrain 917 stops for passengers at Santa Clara Station

Visit the Santa Clara depot museum!

South Bay Historical Railroad Society Museum – Serving railway fans, the community at large, modelers, and related organizations through static displays, working models, public events, tours, and room rentals.

1005 Railroad Avenue
Santa Clara, CA 95050

Admission is free.

Open to the public:
Tuesday 5:00PM - 8:00PM
Saturdays 10:00AM - 4:00 PM

www.sbhrs.org

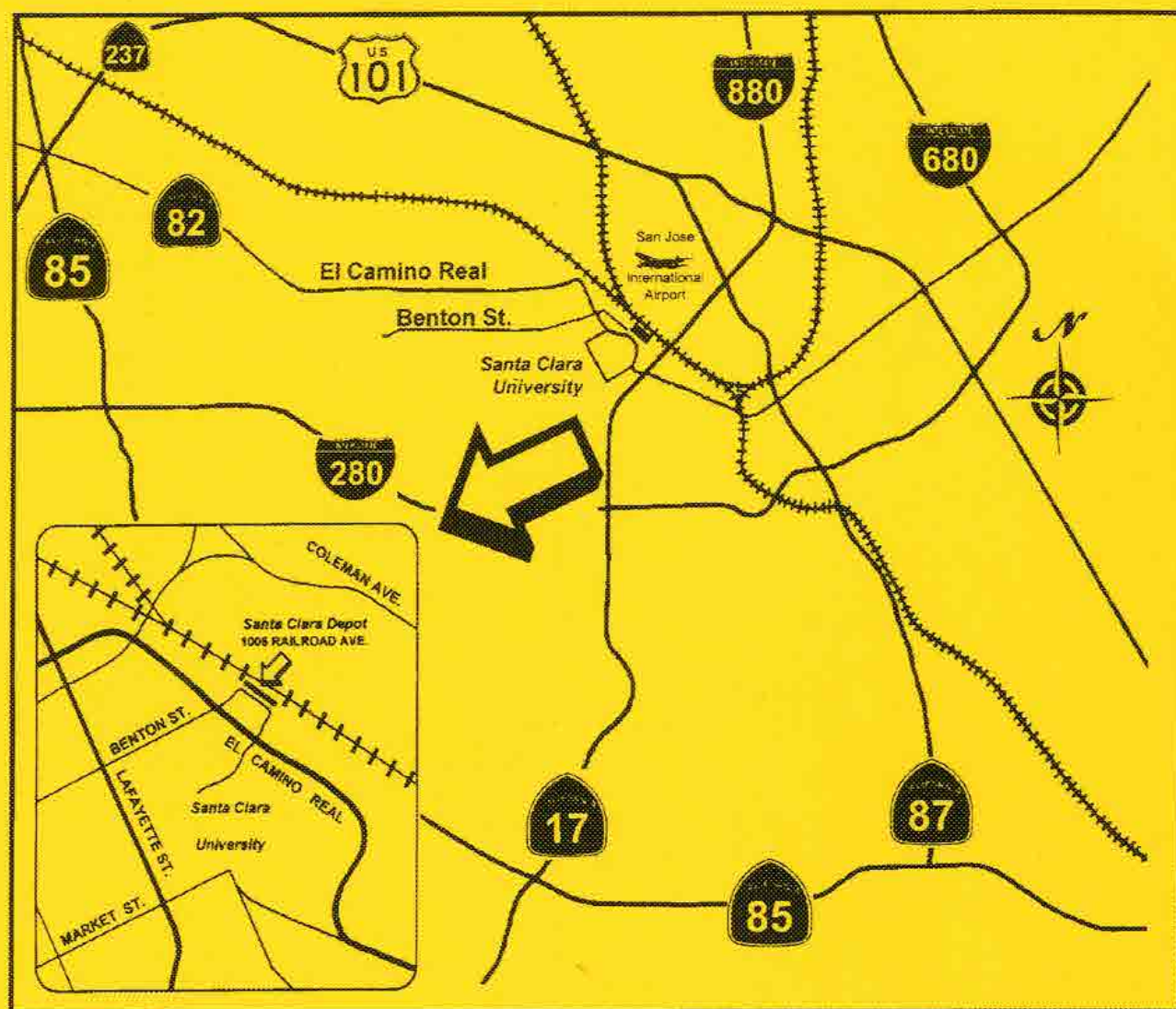
Company Store on E-Bay year around: TrainGuys_SantaClara

A 501(c)(3) non-profit public benefit corporation

Federal ID #77-0071257



New electric Caltrain test train passes Santa Clara Tower



All roads lead to Santa Clara Depot



SOUTH BAY HISTORICAL
RAILROAD SOCIETY

Deck Renewal Completed!

The project to replace the decking all around the Depot was recently completed by the crew from Heartwood Residential. This project has been ongoing during 2023 and it is great to have it completed. As with any improvement task, the real scope of the project wasn't known until after the project had been started.

As work progressed and more of the old decking was removed, it became clear just how much of the supporting structure needed to be replaced as well. This was also complicated by the requirement that as an historic structure, the replacement decking had to look as much like what was originally installed as possible.

As you walk around the Depot, notice how much detail work was required where the decking goes around a corner and especially where it meets the side and end of the business car. Work like this is not easy and requires attention to detail. We are grateful that the team from Heartwood Residential handled all the unforeseen challenges to give us this new decking that will last for years.



New decking installed near the Depot entrance while the rest of the project was completed

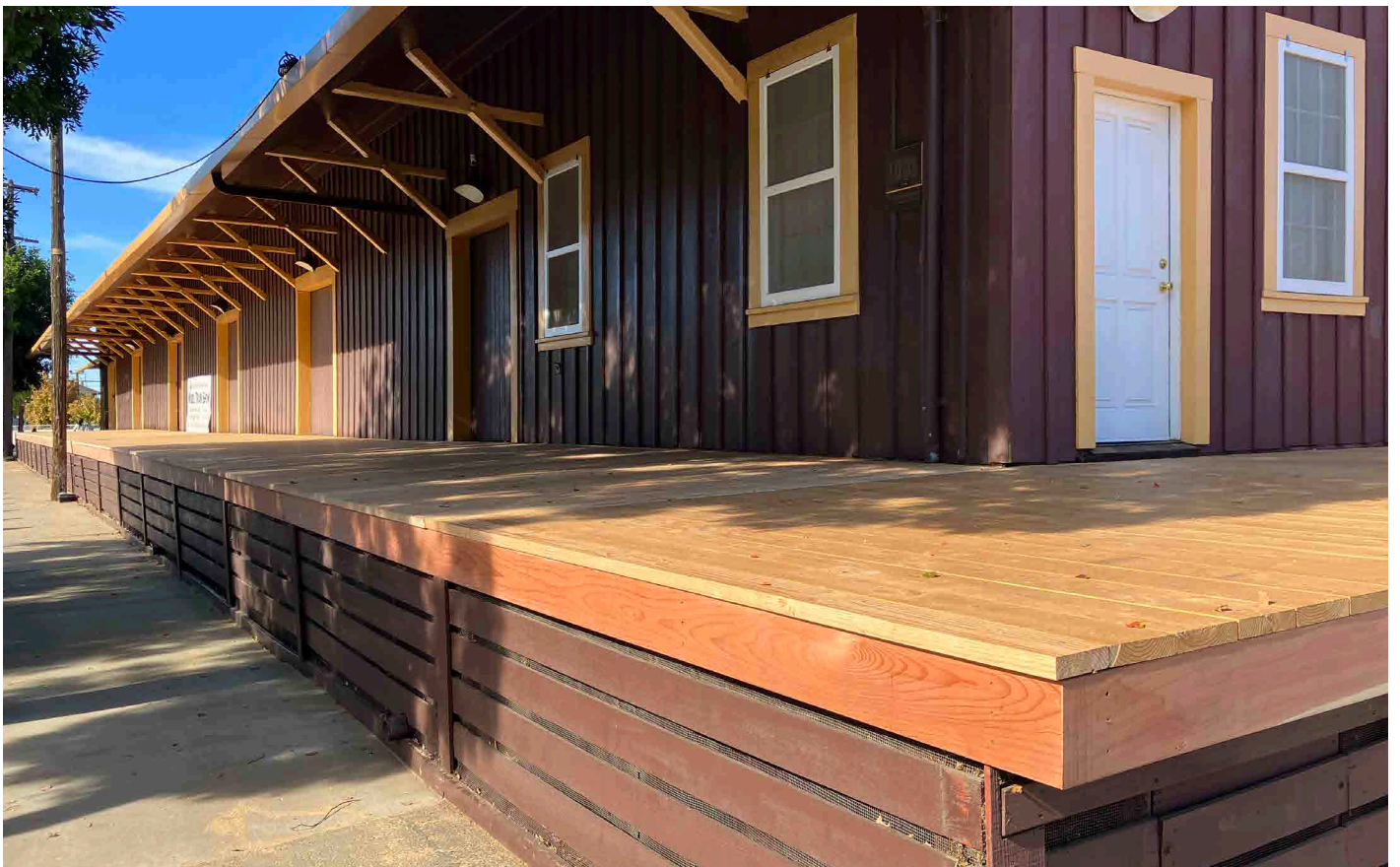




Just past the Depot entrance extensive repairs were needed to the supporting structure



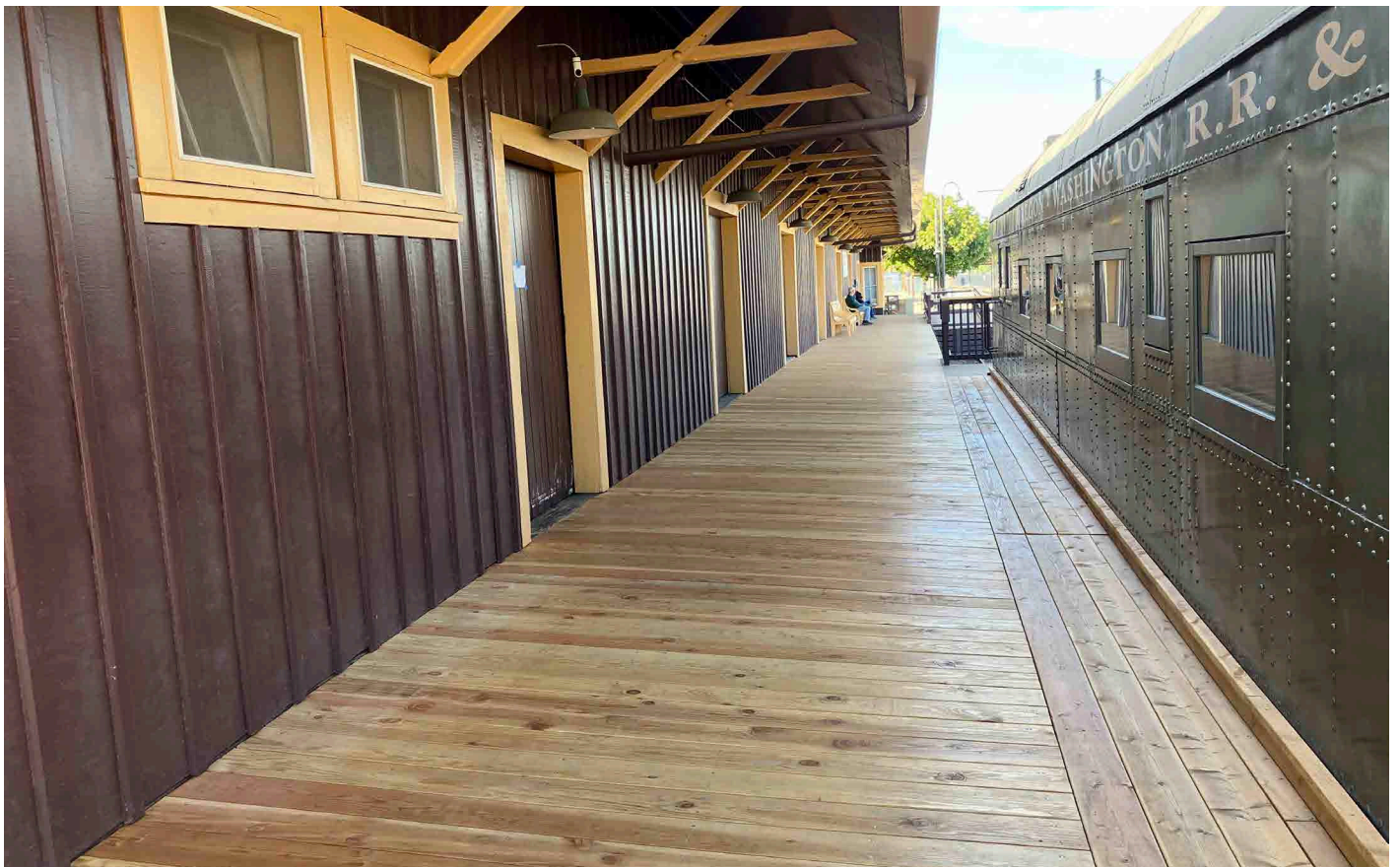
With the project complete we see long runs of new decking



The boardroom end of the Depot



The decking on the ramp was also replaced



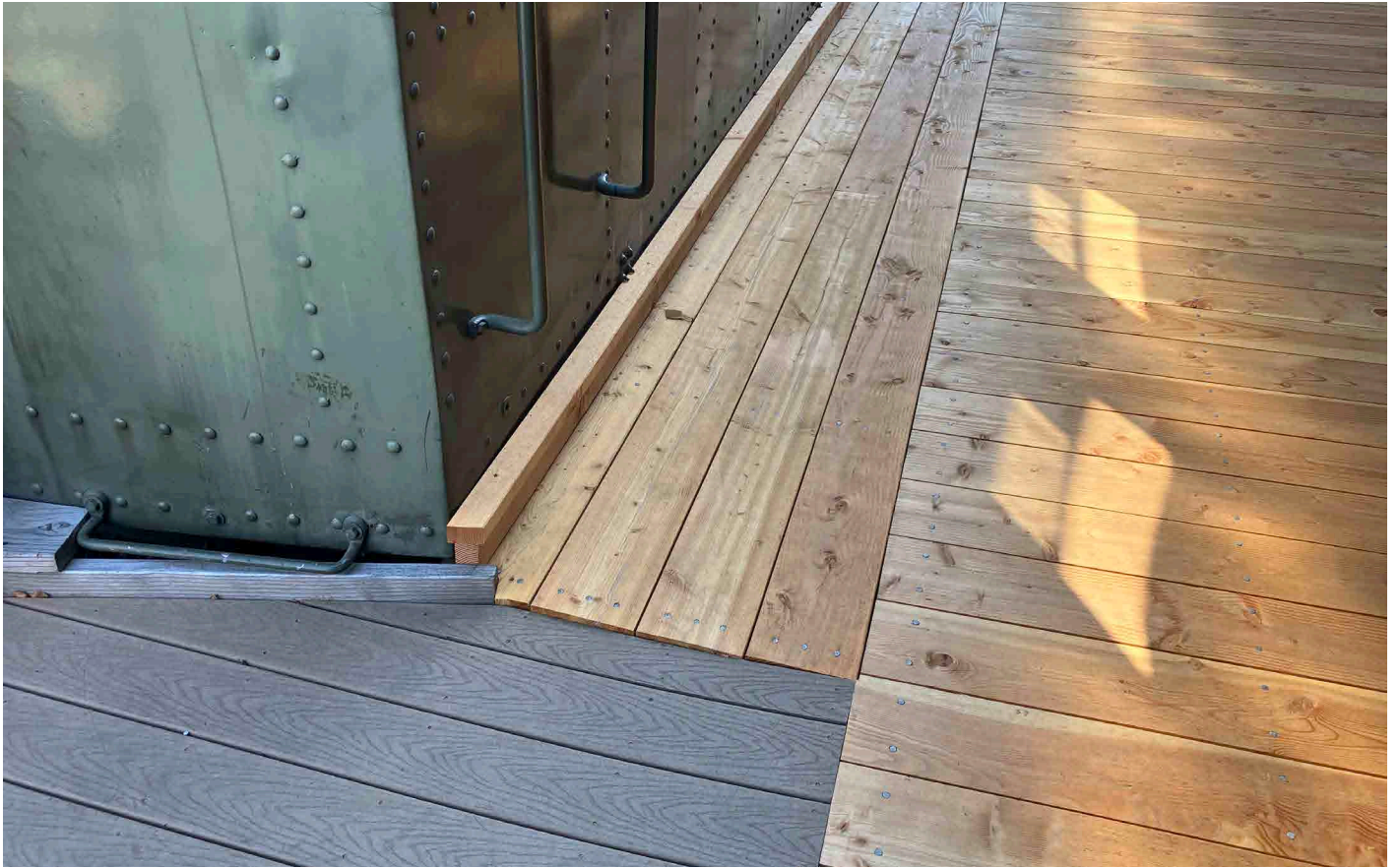
From the south end of the Depot you can see how much decking was involved



Notice where the decking meets the business car...



...the wood was cut to fit around the rivets in the body of the business car



Various trim pieces were required to fill the gap between deck and business car

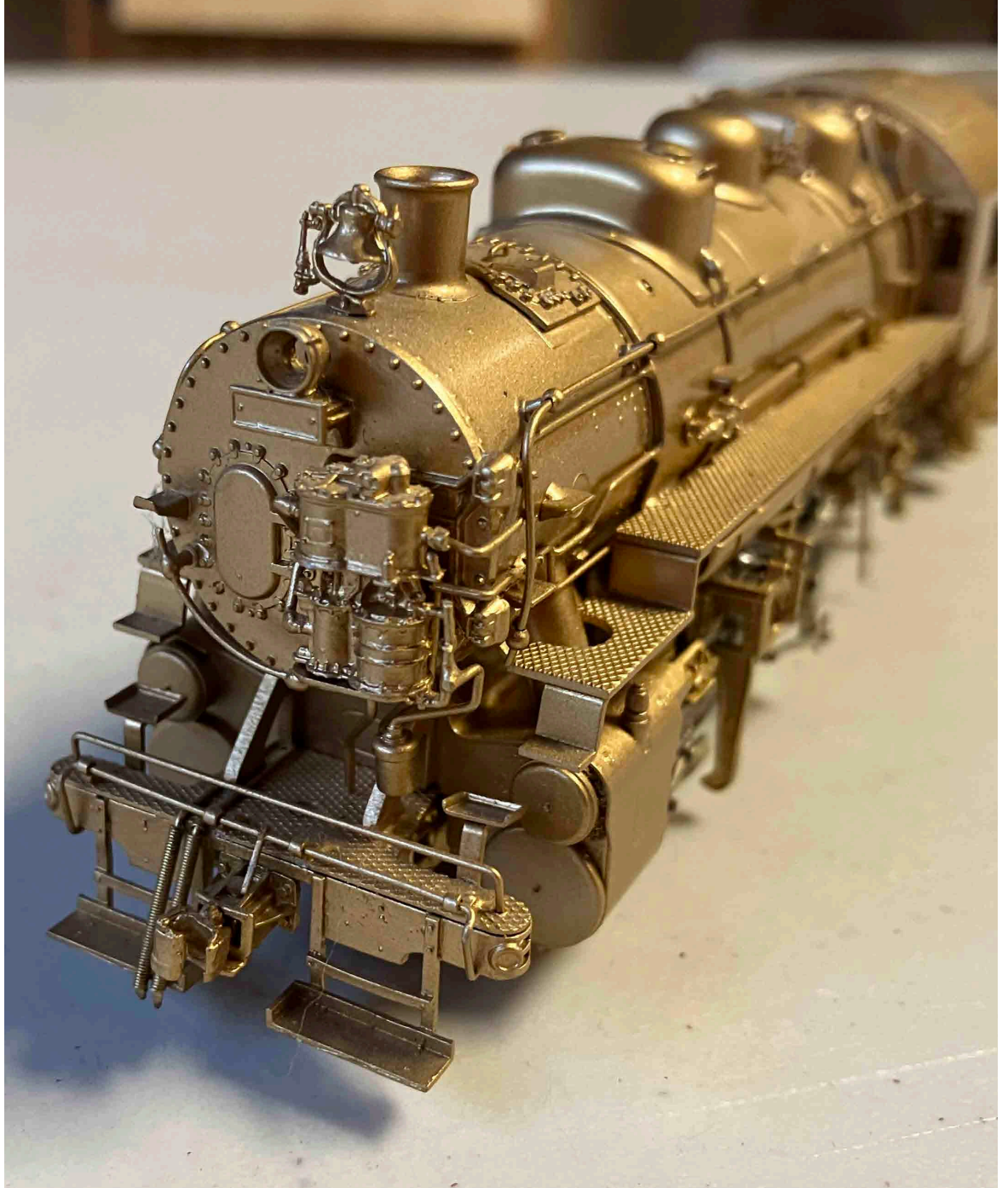


SBHRS member Dale Barney enjoys the new decking



Member success selling on Ebay

The SBHRS Ebay Team sells model train items for non-members every week on a 70/30% commission basis. For SBHRS members the commission split is 80/20%. The team is happy to sell any model train items, any scale, that are good quality and are likely to sell for \$40 or more to justify the time it takes to take photos, list, pack and ship the items.



HO scale brass locomotive sold on consignment



Kato HO scale model of the Flying Hamburger



Various sets of Athearn SP boxcars

All of the items shown here were sold recently by SBHRS volunteers on Ebay. The owners of these items, SBHRS members and non-members alike, are able to find a new home for their model train items and raise some cash in the process.

Ebay seller: *trainguys_santaclara*



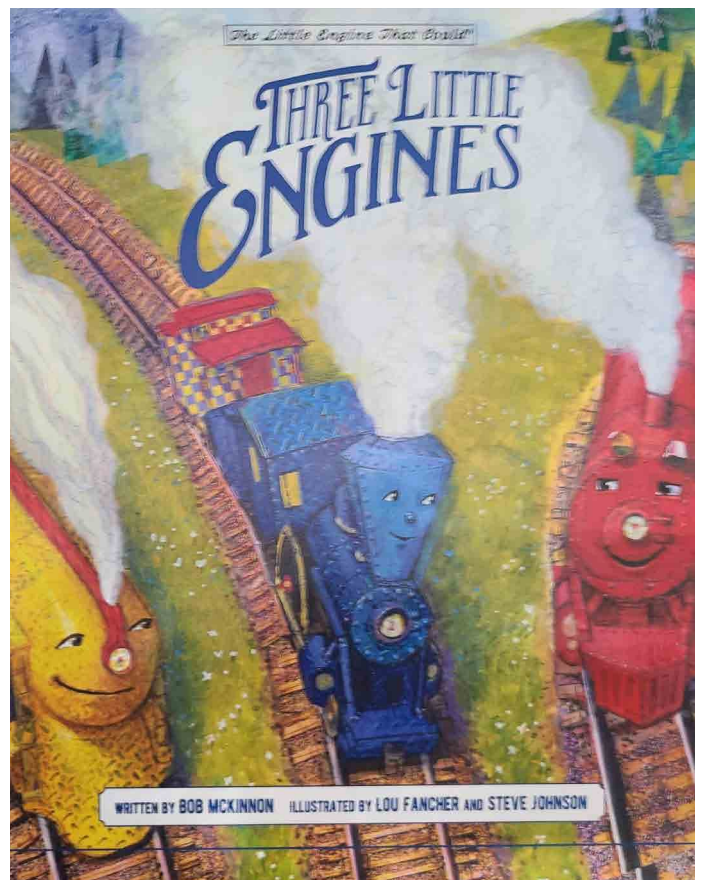
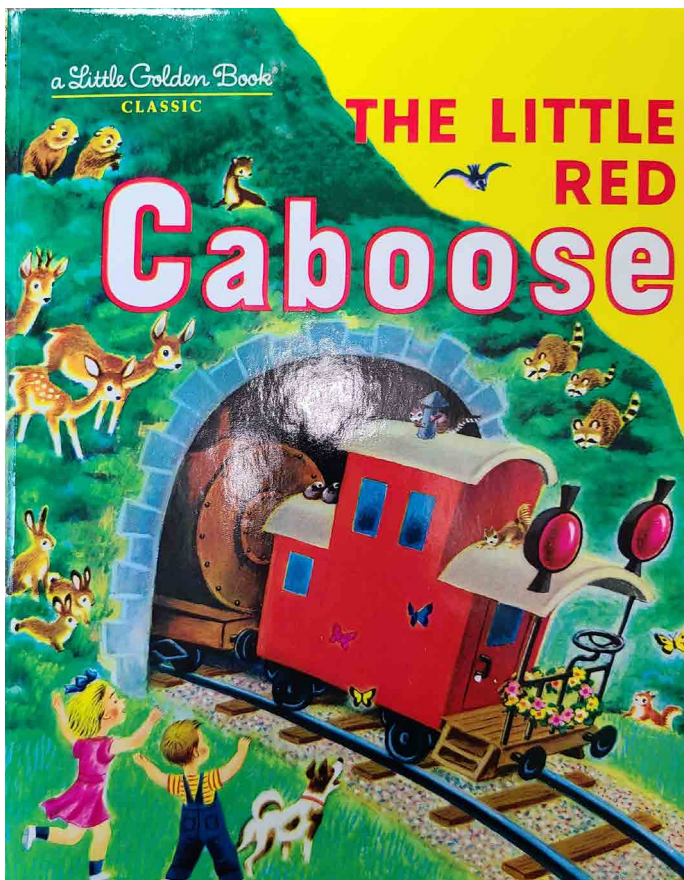
Storytime and the SBHRS Museum

Storytime started about 3 years ago from a suggestion from a visitor, Heather Dunphy. Heather put together and did the reading for the first year after which other members handled reading books. The program became very successful and as a result, parents were taking their children to visit the library. As the number of children coming to the library wanting to check out books to read at home increased, the Library Membership program was created.

Library Membership

The Library Membership program is intended for young children age 3 thru 9. The idea of the program is for young children with an interest in trains to be able to take a book home and read with their parents.

A special membership category of "Library Member" will be in the parent's name. This membership would allow the parent to check out books, maximum of 2 at a time, for two weeks. The membership would be for library privileges only. If they wanted to, they could volunteer to help at shows.



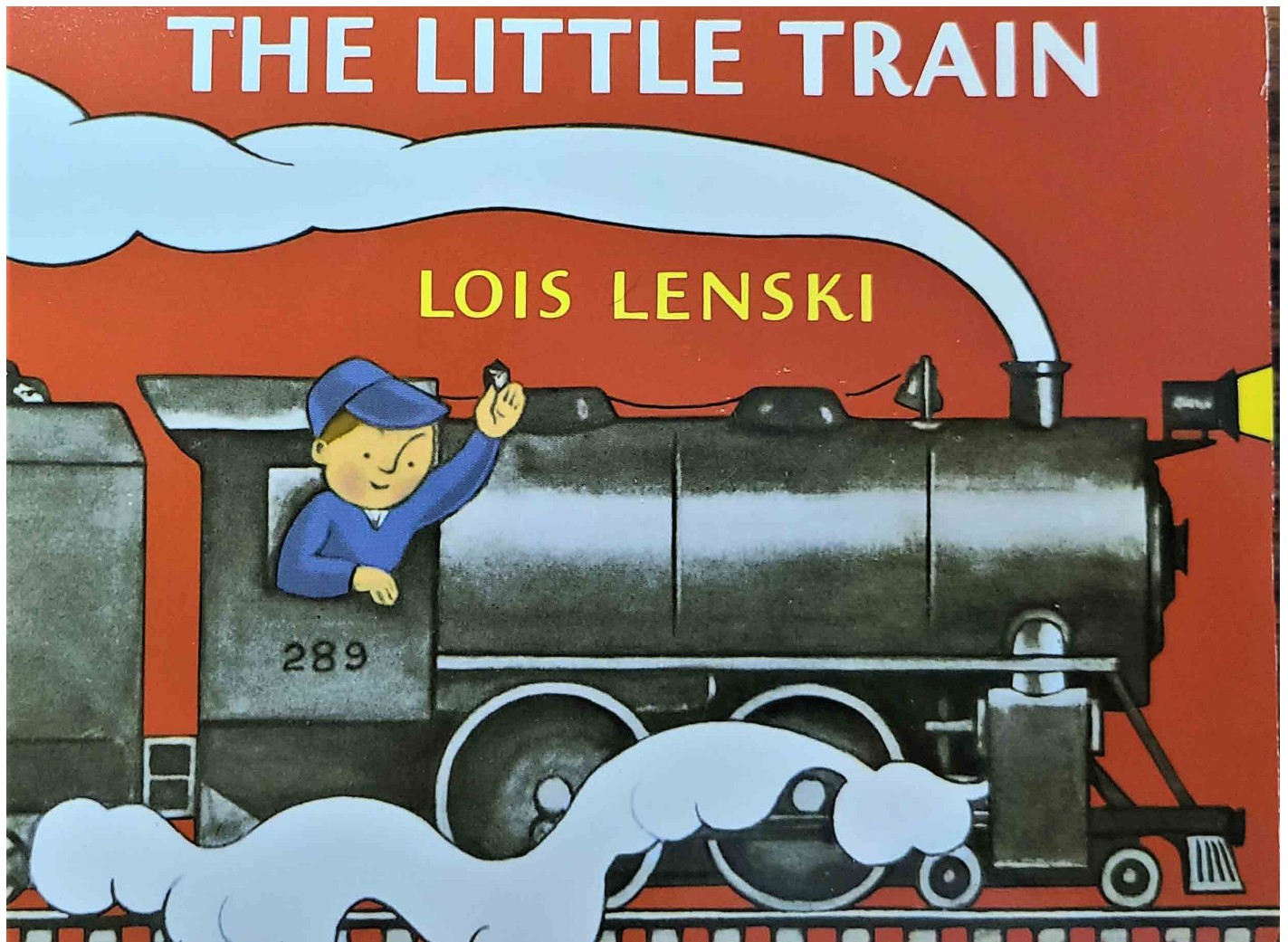
Books that have been read during Storytime

This membership would not include running of trains on our layouts. If the adult members want to run trains, they would need to join as a regular Standard Member. The children would still need to be 10 years of age to run trains.

Dues and Checkout:

Library Membership is \$5.00 / year. No monthly dues. A replacement deposit would be invoiced when the book was checked out and a \$1 per book donation is requested for library support. The deposit invoice would be removed when the book is returned and in as good condition as it left the library. The replacement deposit is the cost of the book as shown in the Library system (Koha) when it was purchased, if available, or \$30 if not available. The collected deposits would be for replacement of the material. Invoices would be collected against the on-record credit card.

We hope this will be a fun adventure for your children and peek their interest in trains even more.



Many books like this are available in the SBHRS Library



SBHRS Open House

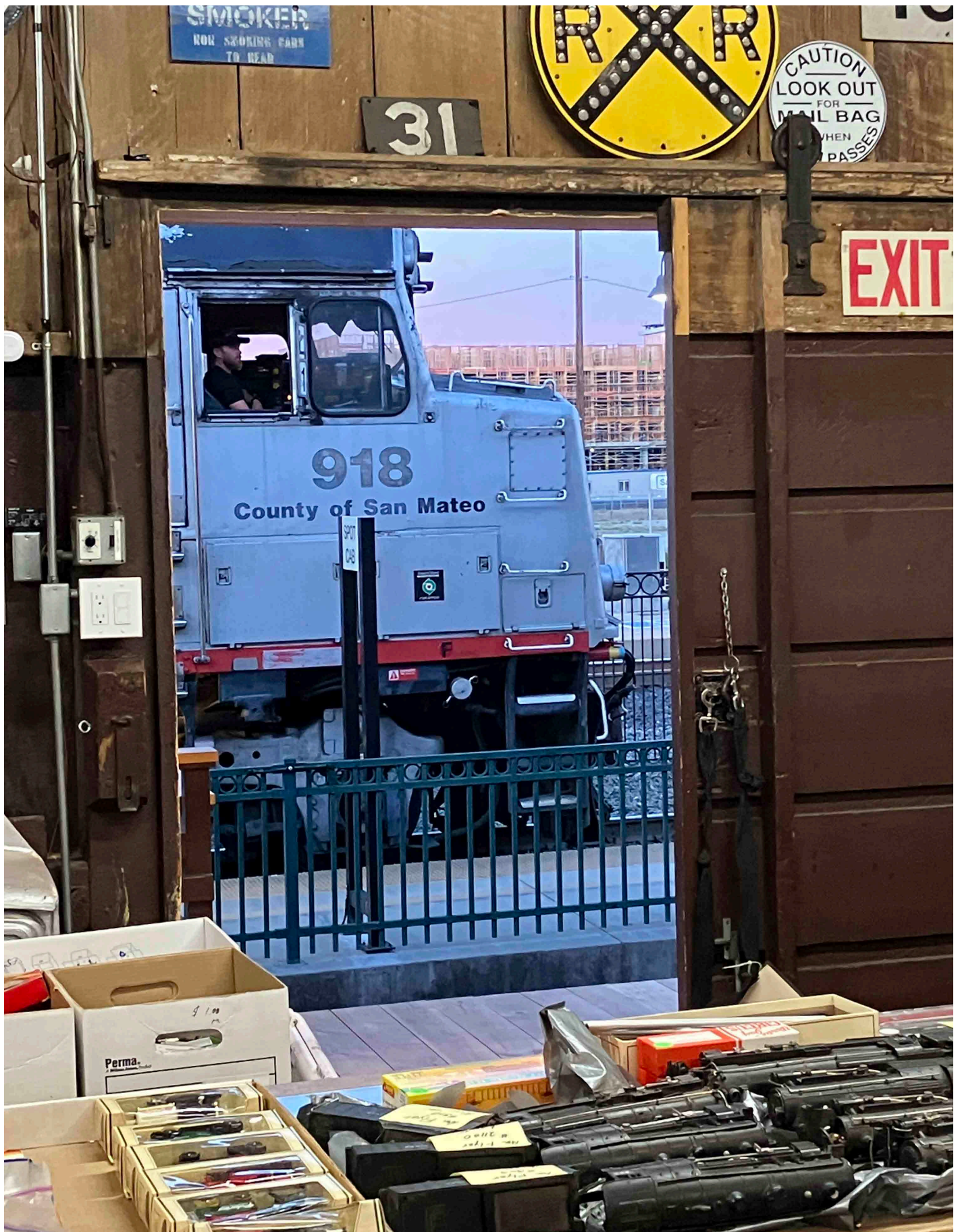
SBHRS holds an Open House twice a year and the most recent of these was Saturday and Sunday November 4 and 5, 2023. It was a lot of work and a lot of fun and raised money to help our group continue the many projects we have underway at the Museum, the Library and the operating layouts. Our next Open House will be April 6 and 7, 2024.

Friday November 3, 2024 -- The Day Before the Open House

Many SBHRS volunteers put in many hours to make each open house happen. The process includes collecting donations throughout the year. These donations are sorted into those that can be listed on Ebay and those that will be sold at the bi-annual Open House event. During the week before each Open House, the items to be sold are brought from storage and displayed.



Donated items are retrieved from storage and displayed for sale



Caltrain is never far away!

SBHRS Open House

Saturday November 4, 2024 -- First Day of the Open House

With all the sale items organized and displayed in the Museum, the SBHRS volunteers are ready to open to the public. At opening time on the first day of the Open House we see a real surge in visitors. It's fun to see how much interest there is in our event and the model train items available for sale. It's always interesting and rewarding to discuss so many aspects of railroads, both real and model, with all the persons that visit SBHRS during each Open House.



Just before opening



Märklin items for sale



H0 scale locomotives are among the most popular items sold

SBHRS Open House

Sunday November 5, 2024 -- Second and Last Day of the Open House

The second day of the Open House is more relaxed as the opening day rush has come and gone. It's also interesting to see which items sold on the previous days and which items are still available. The volunteers rearrange the items for sale in real time during both days and there are always more donated items available than there is space to display them in the Museum. As a result, as items sell and space becomes available, more items are brought out. This means our visitors will see a different set of items for sale on the second day of the Open House.

Our next Open House will be April 6 and 7, 2024.



The line to get in was literally out the door!



Tickets sales were brisk and handled efficiently by the SBHRS volunteers



The operating model train layouts were enjoyed by our many visitors



Western Railway Historical Society

Bureaucracies take their time but eventually, things do get done. My request for full security clearance was granted! I now have full media access to the railroad and its many secrets. I do miss the three-dog security team. Pro tip -- bring a bag of Five-Guys to toss over the fence, the security dogs will be cool!

The layouts rooms have had the blue sky and clouds backdrops for some time but now the photo backdrop of the trees and mountains has been added in the main room. The affect of the two combined is really good! Note that the very small detail of the photo backdrops, for example the tall tree in the photo below, was all cut out by hand before the photo backdrop had been applied.

Needless to say, this takes a lot of time and skill. The same process will be repeated in the second room soon. Again, the effect of a sophisticated backdrop is hard to explain, it really needs to be seen to be appreciated.



Photo backdrops have been added all around the main room



The new photo backdrops continue around the corner



Trees on the layout tie into the trees seen in the photo backdrops



Track work continues in the second room



The blue sky and clouds backdrop awaits the addition of more of the photo backdrops



Storage tracks are being constructed along the far wall of the second room



The sauerkraut factory already has rail service!



In O scale, the SP Sunset medallion is actually a separately applied piece!



SP really did have a thing for light packages on their diesels!



O scale detail is the best!

Testing Complete

Caltrain has completed a testing program covering more than 1,000 miles using three of the twenty-three electric trainsets built by Stadler. These trainsets are scheduled to be in service later this year (2024). The test program was designed to verify that all safety and quality requirements had been met.

Overall, Caltrain currently has six of the twenty-three new trains on site while the rest will be arriving during this year. These new trains will operate on the Caltrain line that runs from San Francisco at the 4th and King station to San Jose at Diridon station. The new service will be able to reduce the travel time for trains that stop at all stations by twenty-five minutes.

If you look at the Caltrain electrification project, it ends at Tamien station which is south of the San Jose Diridon station. This is because rail line used by Caltrain south of Tamien station is owned by Union Pacific railroad that won't allow anything built over their rails. Hence, the overhead wires of the electrification project end at Tamien station.

Diesel powered trains will be used from Tamien south to Gilroy with passengers transferring between trains at San Jose Diridon station.



Caltrain new trainsets pose after completing testing



Test train 308 in San Jose



Automatic couplers for the new Caltrain trainsets

Caltrain 2023 Holiday Train

For the twenty-third year, Caltrain operated their Holiday Train on the weekend of December 2 & 3, 2023.

Santa's train stopped at different Caltrain stations on each of the weekend days. On Saturday the stops were San Francisco, Redwood City, Mountain View, Sunnyvale and Santa Clara. On Sunday the stops were San Francisco, Millbrae, Burlingame, San Mateo and Menlo Park.

The SBHRS Depot was full of visitors wanting to see the special train. They also enjoyed the Museum and model train layouts while they waited for Santa's arrival. Michelin Star quality hot chocolate was served to our guests in the Depot Museum.



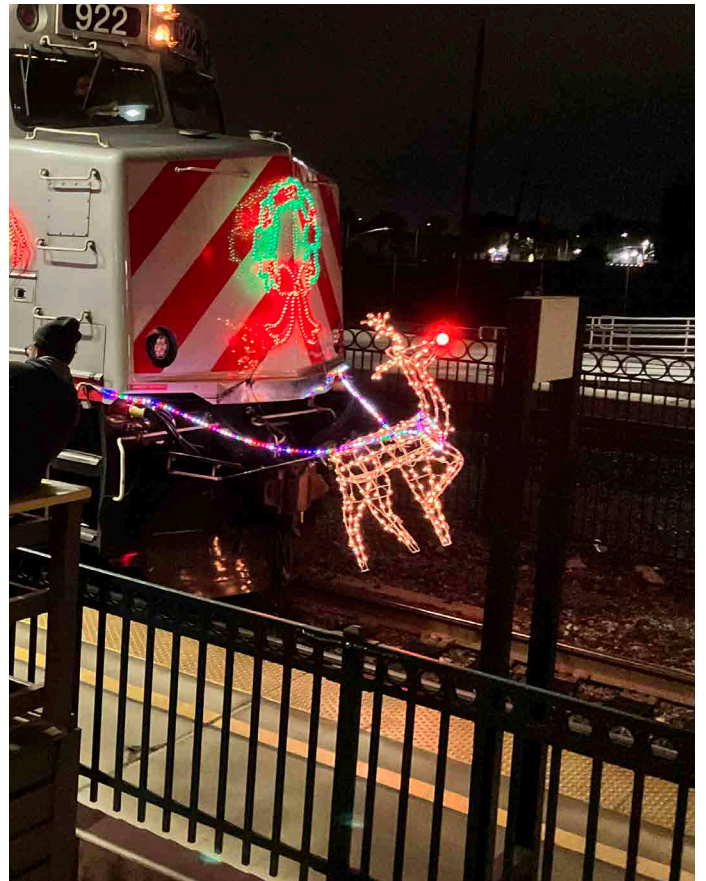
The crowd waiting for the train to arrive



The SBHRS business car platform was full of photographers



The train finally arrives!



Proof that Rudolph's nose does indeed blink!



The Caltrain Christmas Train was fully decorated



As Santa's train approached, the layout room emptied out



Santa exited the cab to work the crowd



Santa ready to depart



Santa brings the Christmas Train up to speed leaving Santa Clara Depot



On this night it was Santa's San Francisco Chief!



After Santa departed, the layout room filled up again

Trains seen on the layouts

During each quarter we see a wide variety of equipment operating over the SBHRS lines. Here we have a selection of what was seen during the last quarter of 2023..

Videos of trains in action on the SBHRS model train layouts are available at: eisenbahnfan.com/sbhrrs/trackage-rights.



Santa Fe 2397, an Alco RS1 switches cars near San Miguel



AT&SF EMD SW 1200 switcher generating revenue near Alhambra station



Great detail in the headlights and number boards!



SP ES44AC 777 is a wonderful fantasy scheme from Athearn Genesis



There are few things in life as beautiful as a Santa Fe F3 A-B-B-A set!



CN 3020 is a GE ET44AC visiting SBHRS rails from the great north



CP 8932 is another GE ES44AC from Canada



Switching San Miguel

San Miguel is a station on the Southern Pacific Coast line, just north of Paso Robles. On a warm late-spring afternoon we gather a string of three PFE reefers and powered by SP 2718, an EMD MP15AC, we leave the yard and head for San Miguel to drop off and pick up various agricultural products.

With our set outs and pickups completed, we return home, another day running on the SBHRS complete.



Mission San Miguel



SP 2718 approaches San Miguel



Passing the old school PFE ice deck outside of San Miguel



Our freight train arrives at the SP station in San Miguel



Leaving the caboose at the station...



...we back up behind the station...



...to spot SPFE 457225 at the Libby storage facility for loading.



Back at the station, we drop UPRX 459452 for a local shipment and we shove UPFE 460638...



...and park it with our caboose.



We retrieve UPFE 460638 and bring it back to our train



Our last step is to retrieve SPFE 457225 and return to take our train back to the yard



Passing Thomas, Annie and Clarabel, just another day on the SBHRS!

San Miguel

The San Miguel area of the SBHRS HO scale layout is modeled after the prototype SP station located just ten minutes on the train north of Pas Robles.

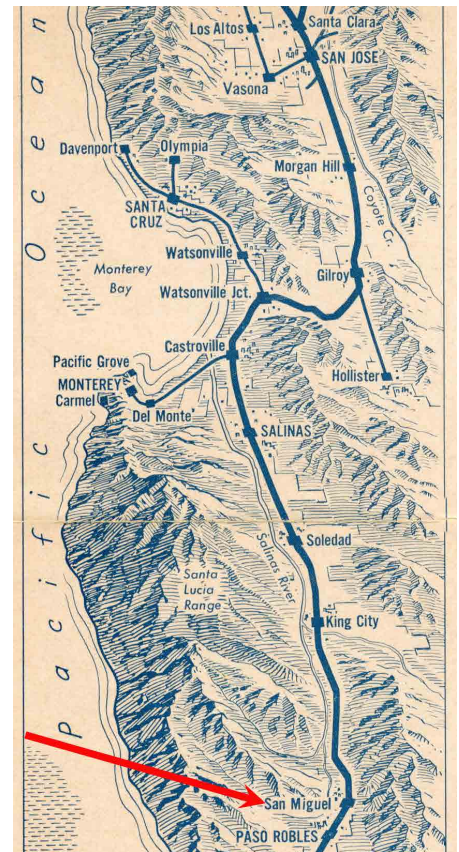
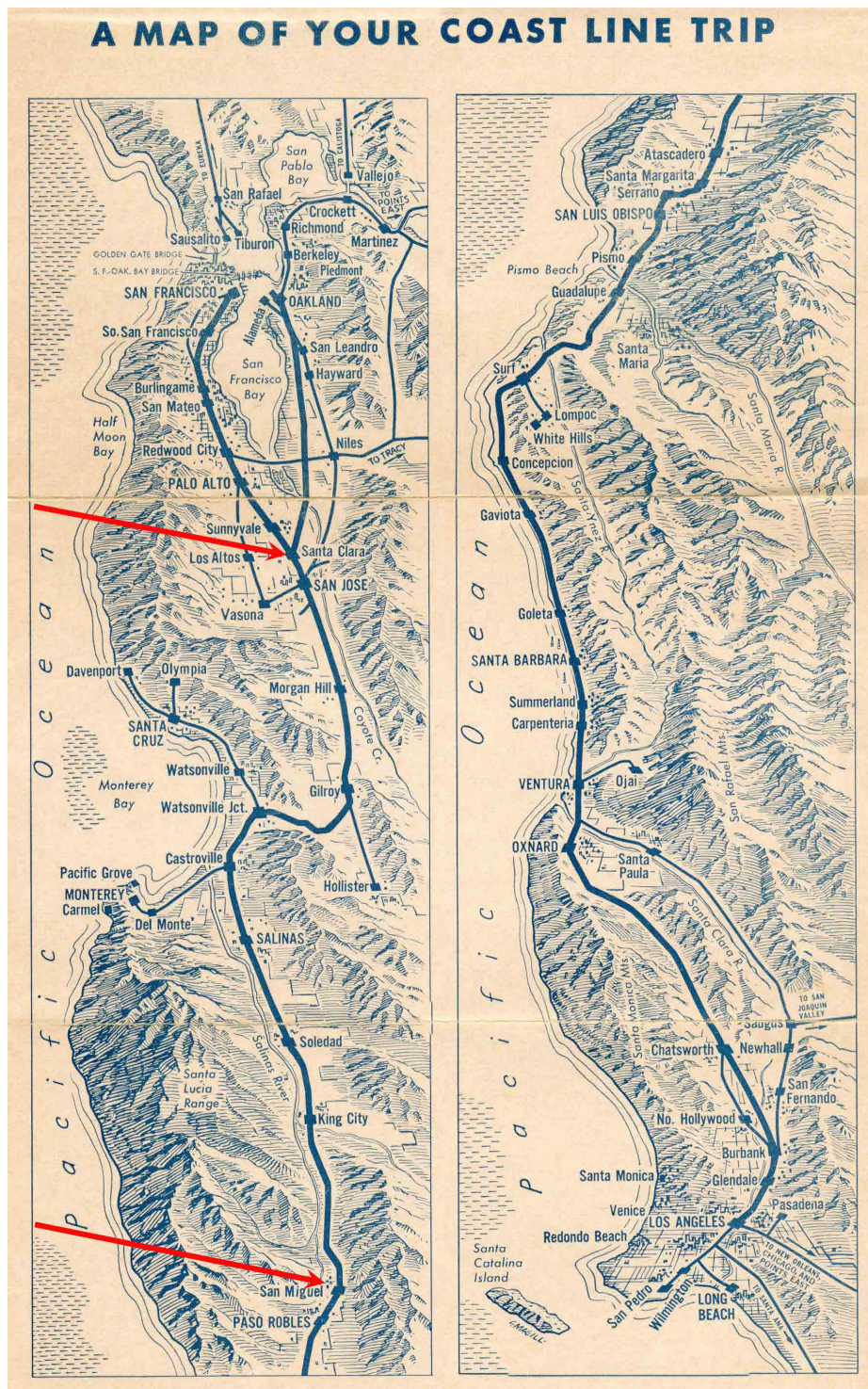


SP Coast Daylight brochure from September 1959

44	9:00 a.m.	SANTA CLARA (69)	5:10 p.m.	426	University of Santa Clara, near center of town on the west, was founded in 1851 by the Jesuits on the site of old Mission Santa Clara.
47	9:18 a.m. (Stop)	SAN JOSE (86)	5:05 p.m. (Stop)	423	(San Ho-say') Hub of Santa Clara Valley. San Jose is one of the fastest growing industrial areas in the West. Its State College is oldest public educational institution in California. Through Daylight cars for Oakland passengers and San Francisco Peninsula passengers connect here. It is not necessary for passengers to change cars.
77	9:49 a.m.	GILROY (192)	4:20 p.m.	393	Gilroy is at the south end of the abundant Santa Clara Valley, far-famed for its fruit orchards. Springtime blossoms in the valley are beautiful sights.
97	10:15 a.m.	WATSONVILLE JCT. (21)	3:55 p.m.	373	Branch line extends through nearby Watsonville to Santa Cruz, a beach resort, 20 miles away. Watsonville is the main city of the rich Pajaro Valley (Valley of the Birds) famed for its apples and lettuce. Portola, early Spanish explorer, discovered the first redwood tree in California at Pinto Lake near Watsonville.
107	10:28 a.m.	CASTROVILLE (18)	3:42 p.m.	363	Known as "the artichoke capital of the world." Branch line extends west from here to famous Monterey Peninsula, location of historic Monterey, Pacific Grove, Carmel, Pebble Beach, 17-Mile Drive, Asilomar, Seaside, etc.
115	10:38 a.m. (Stop)	SALINAS (45)	3:34 p.m. (Stop)	355	(Spanish, "salt-pits") Thriving capital of Salinas Valley. Nearby land produces lettuce, sugar beets and other vegetables. Just north of city is the annual California Rodeo arena. Bus connections from here to Monterey Peninsula, Watsonville and Santa Cruz.
140	11:01 a.m.	SOLEDAD (182)	3:06 p.m.	330	(So-lay-dahd, Spanish, "solitude") Town is built on a fertile plain above the Salinas River. Across river is Mission Soledad (1791), now under restoration. Pinnacles National Monument is 14 miles northeast. Large modern buildings to east are new California State medium security prison.
160	11:21 a.m.	KING CITY (333)	2:47 p.m.	310	The principal city and recreation center of upper Salinas Valley. Important bean, beet, grain and livestock area.
203	12:05 p.m.	SAN MIGUEL (616)	2:05 p.m.	267	(San-Me-gelle') West of tracks, south of town, is old Mission San Miguel, built of adobe in 1797.

San Miguel is 203 railroad miles from San Francisco

The city is best known for the Mission San Miguel Arcangel which was built in 1797. The original route of Highway 101 started at the south end of San Miguel. The Southern Pacific station in San Miguel ("St. Michael") was built in 1886 and demolished in 1979. There were efforts to save the Depot but it didn't work out.



San Miguel north of Paso Robles

SP was building south from San Francisco and reached San Miguel in 1885 which provided a railhead for shipping.

During WWII San Miguel grew rapidly when nearby Camp Roberts was built. At it's peak, there were 45,000 soldiers stationed there which naturally created a lot of business for San Miguel.

Camp Roberts was then deactivated in the 1950's and Highway 101 was rebuilt to the west of town. Business declined after these events.

The Coast Daylight took about 4 hours to get from SF to San Miguel

END SANTA CLARA BLOCK

MP 44.8

