

BEGIN

# SANTA CLARA BLOCK

MP 42.6

SOUTH BAY HISTORICAL RAILWAY SOCIETY


JULY 2023



# SANTA CLARA BLOCK

July, 2023

Welcome to the Santa Clara Block, the quarterly newsletter of the South Bay Historical Railroad Society. We have had a great second quarter of 2023 with many activities in the Depot Museum, lots of visitors to our operating HO and N scale layouts as well as a very successful Open House held in April. Please join us at the Santa Clara Depot soon!



Q Enter search string

[Home](#) [Museum](#) [Library](#) [SBHRS Calendar](#) [Events](#) [About Us](#)



## SOUTH BAY HISTORICAL RAILROAD SOCIETY



**The South Bay Historical Railroad Society is open to the public:**

**Tuesdays 5:00pm to 8:00pm**

**Saturday from 10:00am to 4:00pm**

**We look forward to seeing you soon!**

website for South Bay Historical Railroad Society -- sbhrs.org

## On the Cover

**Cab Forward 4294  
seen on the Western  
Railway Historical  
Society O gauge layout.**

**May 22, 2023  
Photo: Brian Hitchcock**





---

# MANIFEST

## IN THIS ISSUE:

|  |    |
|--|----|
| TIMETABLE .....                          | 4  |
| SANTA CLARA DEPOT .....                  | 6  |
| WESTERN RAILWAY HISTORICAL SOCIETY ..... | 14 |
| DEPOT UPDATE .....                       | 22 |
| TRACKAGE RIGHTS .....                    | 24 |
| END SANTA CLARA BLOCK .....              | 30 |



## Announcements

Please review the activities shown here and plan to attend!

The Members meeting this month will be July 22nd at 11:30.

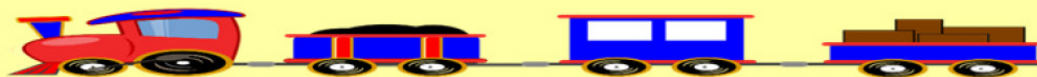
After July, Members meetings will be the second Saturday of odd months.

The Depot operating layouts are open each week on Tuesdays from 5-8pm  
and Saturdays from 10am-4pm.

We welcome new members, please see our website for more information

[sbhrs.org](http://sbhrs.org)

Our next Open House will be in November, look for more details in  
upcoming newsletters!



## Storytime at SBHRS

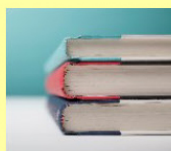


*South Bay Historical Railroad Society  
1005 Railroad Avenue, Santa Clara, CA 95050  
Telephone: (408) 243-3969*

### The Third Saturday Of The Month

Time: 10:30 A.M. – 11:00 A.M.

Unless Otherwise Posted



Please join us for monthly Storytime at SBHRS with Heather Dunphy. Introduce your child to the world of trains and make new friends. Geared towards children under the age of 8, their siblings and friends. Must be accompanied by parent or caretaker.

Story Time is offered every month on the third Saturday





# MEET & GREET

South Bay Historical Railroad  
Society (SBRHS) Hosts  
**SCALETRAINS™**

Location: 1005 Railroad Ave, Santa Clara, CA 95050

**MONDAY, JULY 31, 2023 • 7:00 PM**

**EVERYONE WELCOME**

- See SCALETRAINS' Latest Models
- Meet the SCALETRAINS Team
- Hear the Amazing SCALETRAINS Story
- Learn How Model Trains Are Made
- Question & Answer Session
- Gift Bags Plus Giveaways
- And More...



**SCALE  
TRAINS**

**SCALETRAINS.COM/ROADTRIP**

ScaleTrains • 4901 Old Tasso Rd NE, Cleveland, TN 37312  
844-9TRAINS 844-987-2467 • International 423-299-3689



Join us for a Scale Trains update



## Santa Clara Depot

The Santa Clara Depot that we enjoy today has a long and colorful history and is made up of three (or four) parts. The original depot with its passenger waiting area, stationmasters' office and baggage storage room is at the north end of the structure. Next is the freight house, which was extended so you could count it as one or two parts, and at the south end we have the former Acme Freight Company office. It seems appropriate that our board members are toiling away in the Acme offices -- time to order more anvils! Beep-beep!

The station is in the National Register of Historic Places as the oldest railroad station in California that was in continuous service. The ticket office was in use until 1997. It is also the only structure that remains from the first phase of construction of the San Francisco and San Jose Railroad (SF&SJ) which would become part of the Southern Pacific Railroad (SP) in 1870. Note that at this time, San Jose was the capital of California.



Santa Clara Depot today...





From upper left, the original passenger depot, the expanded freight building and the boardroom

Building the Santa Clara Depot was started in 1859 before the Civil War. Rail service began in the fall of 1863 and the Depot was completed later that year. Rail service all the way to San Francisco began in January of 1864. The Depot's board-and-batten construction makes it distinctive as few examples of this type remain. The clear heart redwood used to build the Depot came from the local mountains.



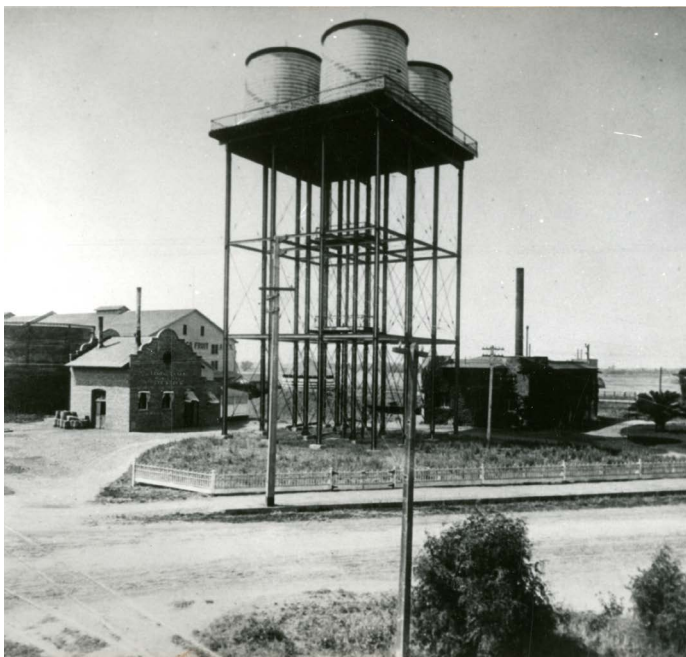
The Depot is also unusual in that it still reflects the original construction methods and is largely in the original location. The Depot played a vital role in the growth of Santa Clara College which was started in 1851 and is now known as the Santa Clara University. The university was a stock holder in the SP so the location of the Depot, near the university was not a coincidence.

...and in 1985 as restoration began





Santa Clara Depot looking south 1904-1905, photo taken from water tower below



Water tower where Santa Clara Police Department is now, collapsed after 1906 earthquake





Santa Clara Depot looking southwest 1904-1905

The local farming and fruit industries relied on the Depot to ship their products to market. When the transcontinental railroad was completed in May of 1869, the first fresh fruit shipment, a car full of pears, was sent from Santa Clara Depot to the east coast in October of the same year.

The Depot was originally built on the east side of the tracks, across the tracks from where it is now. It was moved in 1877 to where it is today so that it would be on the same side of the tracks as the city and university of Santa Clara. This reduced the safety issues of needing to cross the tracks to access the passenger and freight depot. The telegraph operator's bay window was added as part of the move. The building as we know it has been in its current configuration since 1885.





Depot as seen from the northeast, the telegraph operator's bay is visible -- 1912



North end of Depot looking south -- 1912





South end of Depot looking north -- what is now the Board Room -- 1912



SBHRS begins restoration -- 1985





1992 — are those the signal masts that are now inside supporting the signals in the layout room?

The original structure was a way station measuring 24'x50'. When it was moved to the current location, it was joined to the existing freight house that was 32'x50' which had been built a few years before the move. The freight house was expanded to its present size of 32'x160' as the volume of freight being shipped increased.

Caltrans acquired the Depot in 1983 from the Southern Pacific Railroad. In 1985 the South Bay Historical Railroad Society (SBHRS) was established and began restoring the building with a lease from Caltrans. The former baggage storage room now houses the SBHRS library, the original freight house is now the SBHRS meeting room and museum and the freight house extension now has both the HO and N scale operating layouts. What was the office of the Acme Freight Company has been restored as a turn of the century railroad boardroom.





The Caltrain Holiday Train is always well decorated...



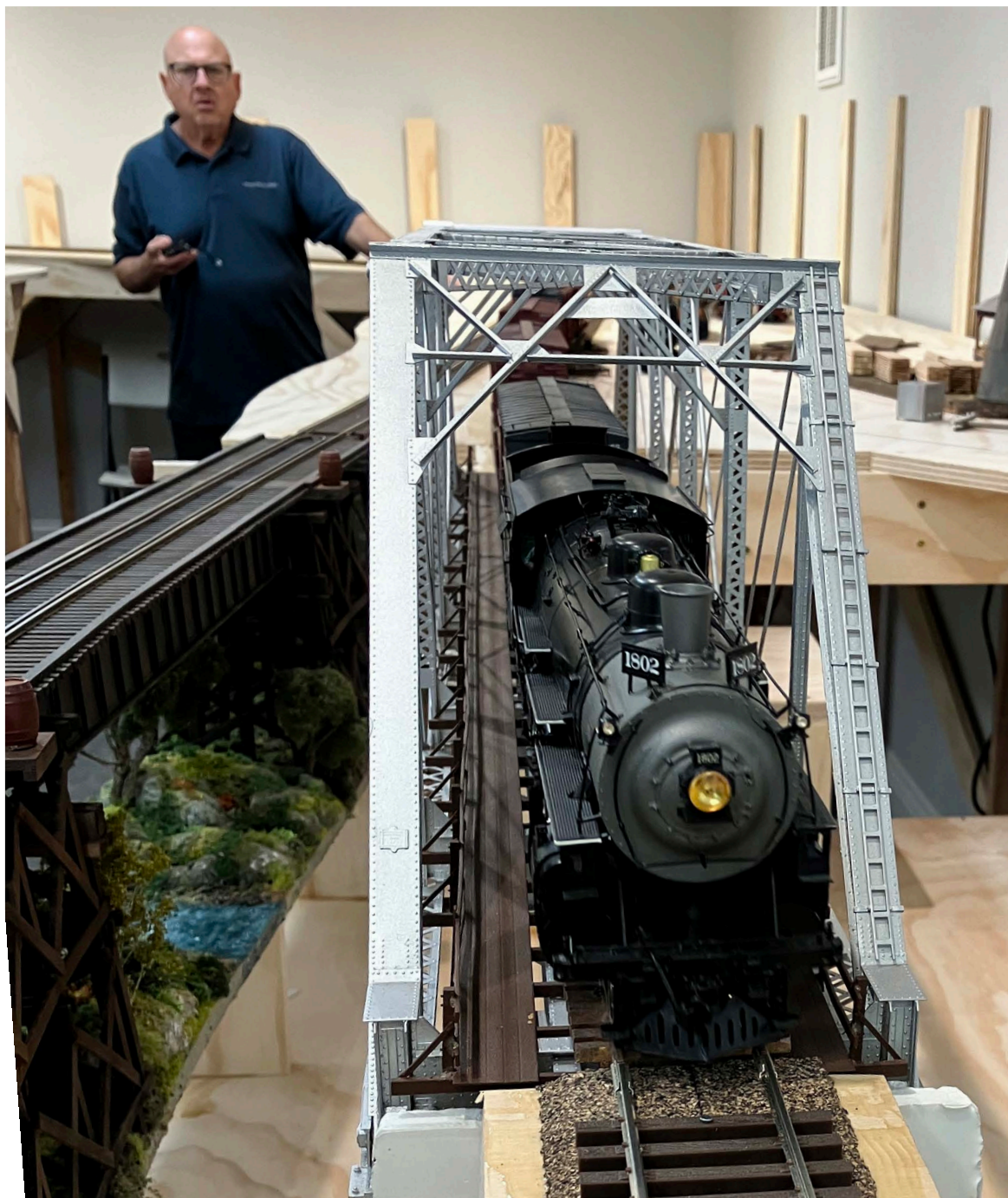
...and always stops at Santa Clara Depot!





## Western Railway Historical Society

Chuck Sted along with a brave team of believers is building a new O-gauge layout in a secure, undisclosed location. Our stealth team was able to gain access to this highly secure facility and bring you these images of the progress so far. The prototype is located along Beaver Creek somewhere in the Great Northwest.



1802 crosses the bridge of what will soon be the wye to the second room





Lots of wiring remains to be done



Wonderfully large radius curves for O scale





The cab forward passes Beaver Creek Depot





Cab Forward 4294 – the detail in O scale is breathtaking

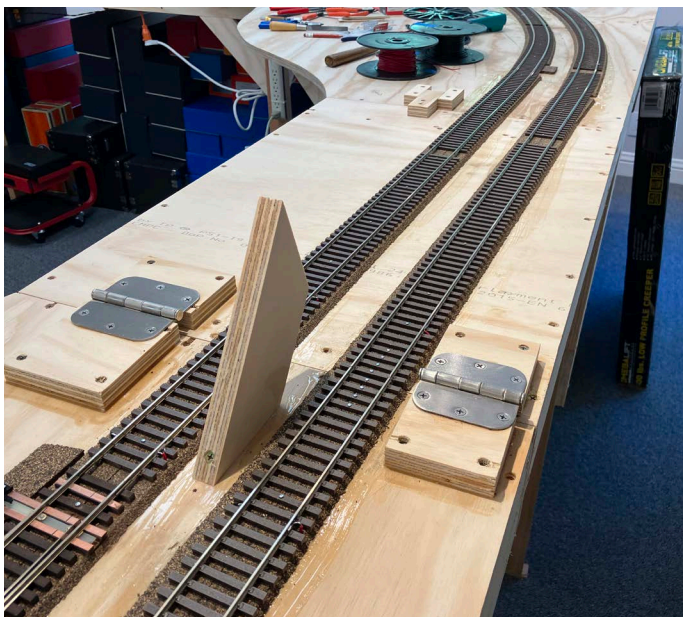


SP 2472 – I thought it was in Schellville?



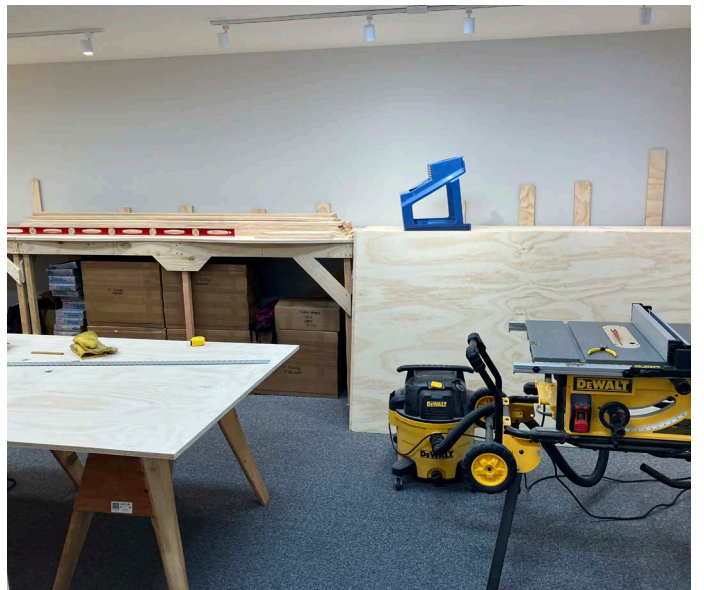


The wye will lead to the second room of the layout



This is the first of three lift-up sections that will provide access to the layout





Six photos showing progress in the second room of the layout





Beaver Creek Depot



The evolution of railway dining?





1802 is ready to highball!



## Depot Update

The Depot has seen a lot of activity during this quarter. We have many young visitors for Story Time in the museum and lots of trains are operating on the HO and N scale layouts on Saturdays and Tuesdays.

Various restoration and library projects are also underway.



The Depot in late afternoon







Story Time continues to be popular...



...and our visitors will soon be off to enjoy the layouts next door



## Trains seen on the layouts

We see a great variety of trains operating on the HO and N scale layouts. Here are some photos of trains we saw recently.

Videos of these same trains in action are available at: [eisenbahnfan.com/sbhrs/trackage-rights](http://eisenbahnfan.com/sbhrs/trackage-rights).



A classic, the Daylight with a full consist



The observation car with the iconic Daylight logo drumhead





The very latest Amtrak power



ACE Train bound for Altamont Pass





A quiet day at the diesel facility





Switch engines at rest



The Daylight pauses at Diridon



AT&SF 3751 drifts through Diridon with the Express Mail





N scale CP freight



Beautiful new HO power from the lands to the north





Markers on the end of the local freight on the branch line



Taxis await arriving passengers



SP meets AT&SF steam power south of Diridon



# END SANTA CLARA BLOCK

MP 44.8

